

U.S. Patent 6,514,146 U.S. Patented Vibralow® Bellows Coupling

Rubber Cover Clamping Model "VLRC 60"

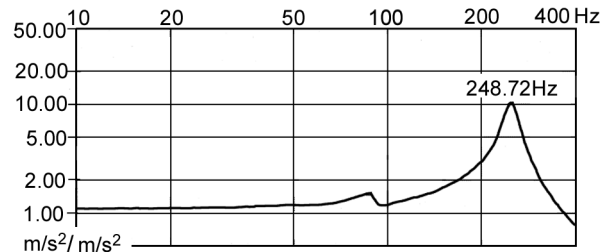
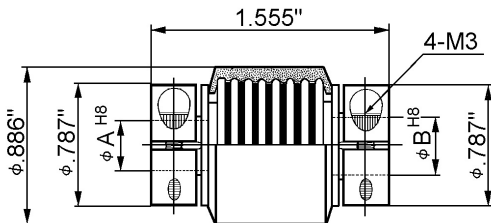
《Rubber and a rubber cover outside the Bellows dampen oscillations to the lowest value》

- ☆ A Chloroprene Rubber Cover and soft rubber filled into valleys outside the Bellows yield restoration to the coupling and quickly dampen oscillations caused by stepping, servo and other motors.
- ☆ Efficient torque transmission and accurate rotational positioning are achieved throughout the entire operational range.
- ☆ The Vibralow Coupling requires precise installation to the shaft to keep long life.

(Thin Two-ply Bellows Clamping Coupling with rubber)

Part No. VLRC60-29-(A × B)

※ Oscillations under 100 hertz will quickly be dampened to a minimal value by rubber outside the Bellows.



☆ Natural Frequency: 248.72Hz

※ Bore A and B can be specified from 0.158" - 0.250" and customer sizes

| Part No. | φ A in. | φ B in. | Rated Torque kgfcm | Inertia gfc ² |
|--------------|-------------|---------|--------------------|--------------------------|
| VLRC 60 - 1 | 3/16 | 3/16 | 16 | 35.61 |
| VLRC 60 - 2 | 3/16 | 1/4 | 16 | 36.53 |
| VLRC 60 - 3 | 1/4 | 1/4 | 16 | 36.46 |
| VLRC 60 - 4 | 5 mm | 5 mm | 16 | 36.60 |
| VLRC 60 - 5 | 5 mm | 6 mm | 16 | 36.57 |
| VLRC 60 - 6 | 6 mm | 6 mm | 16 | 36.54 |
| VLRC 60 - 7 | 1/4 | 6 mm | 16 | 36.49 |
| VLRC 60 - 29 | Other bores | | 16 | |

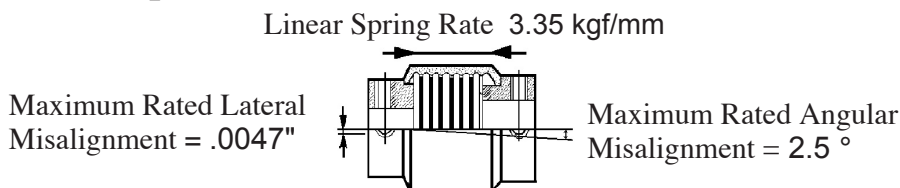
Allowable Tolerance

| Bore Diameters | H8 |
|-----------------|-------------|
| .118" ~ .236" | +.0007" ~ 0 |
| (.236") ~ .394" | +.0009" ~ 0 |
| (.394") ~ .709" | +.0011" ~ 0 |

Technical Data

Rated Torque 16 kgfcm
 Maximum Speed 14,880 rpm
 Torsional Stiffness 7.5 × 10⁻⁴ rad. / kgfcm

Misalignment Capabilities



Maximum values are not additive, each assumes zero for the other, but lateral and angular misalignment can be combined proportionately: e.g. 50% of each

| | | | | |
|-----------|--|-------------|------|----------------------------|
| Materials | Brass bosses, with set screws, soldered to phosphorus bronze Bellows and Nickel plated throughout. | Part Number | | VLRC60-29-A-B |
| | | Scale | Free | Yunika® Corporation, Tokyo |